

USER GUIDE



Skilling cTrader

Trade responsibly: Your Capital is at risk*
This content is provided for information purposes only and should not be construed as containing investment advice.

Introduction

Skilling cTrader is an advanced yet very user-friendly platform, designed to meet even the most demanding traders' expectations.

It is available on several devices and Skilling has integrated it with Skilling Trader platform, so that it can be used in parallel under the same account.

Whatever you trade via Skilling cTrader will be reflected to Skilling Trader as well and vice versa.

Skilling cTrader can be used via the web browser, phone, or by downloading the cTrader desktop app.



Trade responsibly: Your Capital is at risk*




Installation

Skilling cTrader Desktop

Installing the Skilling cTrader platform on your computer is an easy and straightforward process:

1. Log in to Skilling.com website.
2. Go to the burger menu ☰ at the top left corner.
3. Then to the submenu called 'My Account' and then 'Accounts'.

- 1 If you already have a cTrader account with Skilling, then you can simply click on the cTrader Desktop  icon under the 'Download' column.

If not, then simply open a cTrader account. Once done, the download buttons will be displayed.


- 2 Upon download completion, navigate to the destination folder for your downloads ('Downloads' by default) and launch the installer.
- 3 Follow the on-screen instructions to complete the installation of the platform.

Skilling cTrader Web

cTrader Web is a web-based version of the Skilling cTrader platform that runs in your web browser; meaning that you can trade the markets, on any internet-enabled computer, without needing to download and install any software.

To launch Skilling MT4 WebTrader:

1. Log in to Skilling.com website.
2. Go to the burger menu ☰ at the top left corner.
3. Then to the submenu called 'My Account' and then 'Accounts'.

Find your cTrader account and simply click on the cTrader Web  icon under the 'Downloads' column.



Skilling cTrader Mobile

You can access your platform and monitor the markets and your trading activity from anywhere at any time. To download Skilling cTrader Mobile, visit the Google Play Store on Android devices, or the iTunes Store on iOS devices, and search for **'Skilling cTrader'**.

Alternatively, you can have a download link sent directly to your mobile device by visiting our [cTrader section](#) and hit any of the two icons:

Discover Skilling cTrader





Skilling's integration with cTrader unlocks access to a powerful trading platform with more advanced trading capabilities, such as fast entry and coding customisation, as well as a variety of indicators to help you make better trading decisions.

- ✔ Trade 800+ instruments on multiple platforms
- ✔ Intuitive and educational trading experience
- ✔ No commission or hidden fees

Available on the  **App Store**  **GET IT ON Google Play**

Another way of course, is under your 'Account' section:





1. Log in to Skilling.com website.
2. Go to the burger menu ☰ at the top left corner.
3. Then to the submenu called 'My Account' and then 'Accounts'.

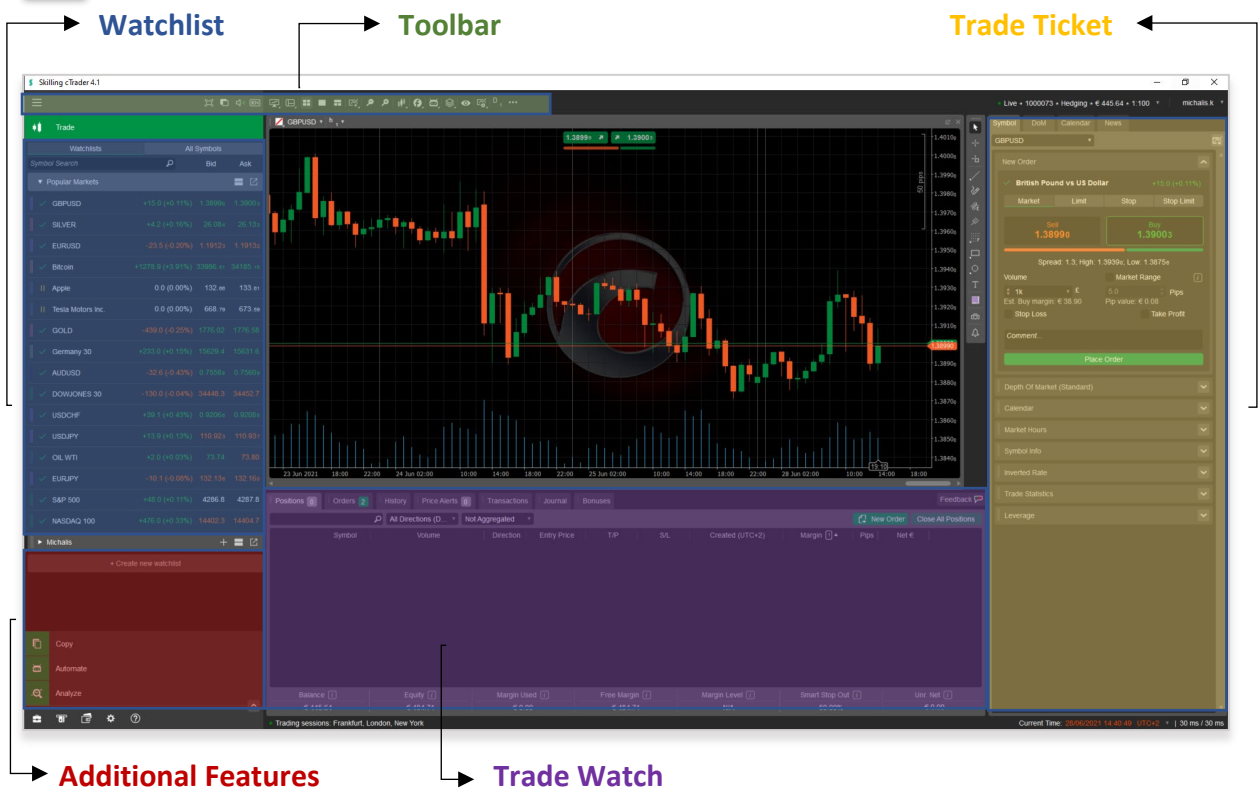
If you already have a cTrader account with Skilling, then you can simply click on the cTrader Android  icon or the cTrader iOS  icon under the 'Download' column.



Platform Features

By default, Skilling cTrader opens with a big chart window. To the left of the chart there is a menu with 4 main features:

-  Trade
-  Copy
-  Automate
-  Analyze



By default, the 'Trade' section will be expanded, and you can see the 'Watchlist' window which contains a list of financial instruments and their corresponding bid and ask prices.

To the right of the chart, you can see the 'Trade ticket' where you can set your desired parameters before placing a trade.

The 'Trade Watch' window appears at the bottom of the screen and contains various tabs that provide important and useful information. For example, the 'Positions' tab is where open orders can be viewed, including the symbol, trade entry price, volume, and profit and loss.

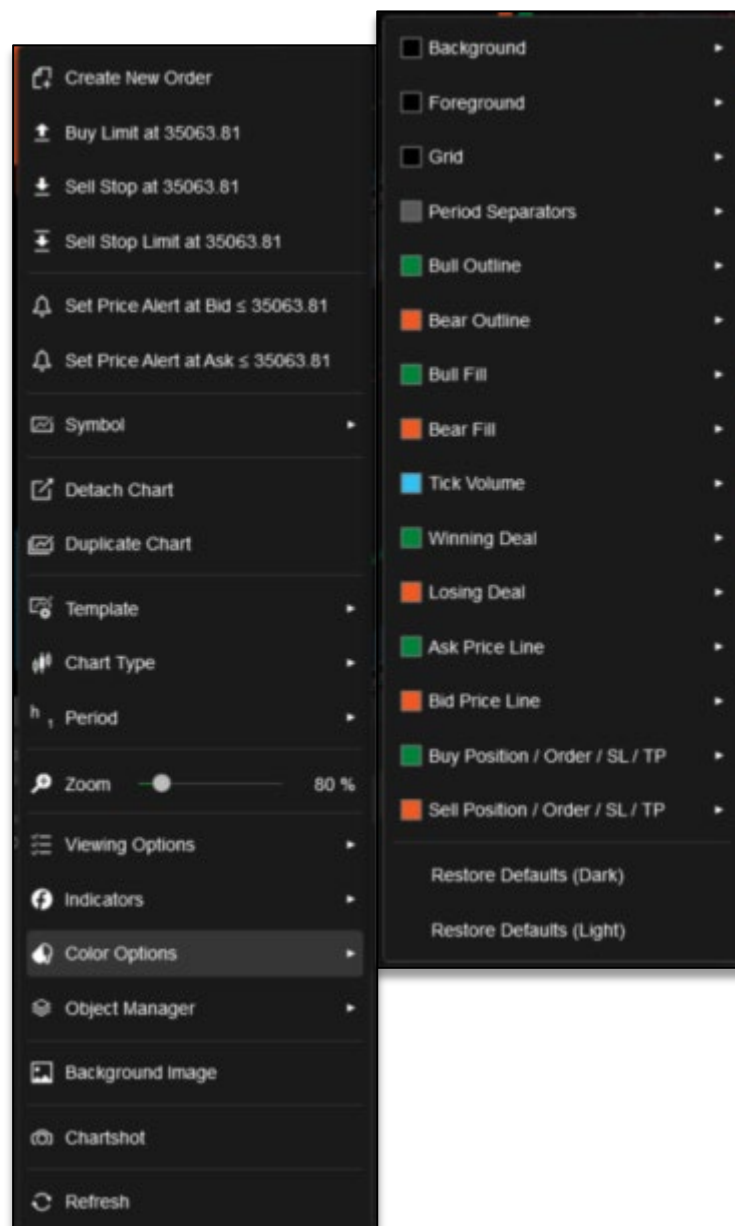


By right-clicking at the 'Headlines' bar within the terminal, you will see a list of many other options to be displayed under 'Positions'.

The 'History' tab displays information about completed trades, while the 'Transactions' tab shows any Deposits and Withdrawals made from and to your account.

Customising your Charts

You can customise any price chart so that it suits your individual preferences. To do that, right-click on the price chart and select 'Color Options'. A window will appear where you can change the colours of various elements including the background, the bars and the ask line.

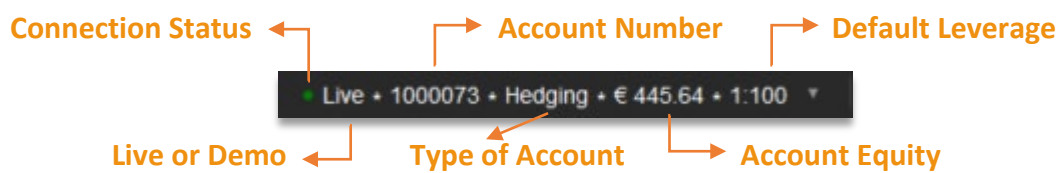


You can also change the Chart, change the Background Image to one of your preferences and also save this as a 'Template'.

Toolbars

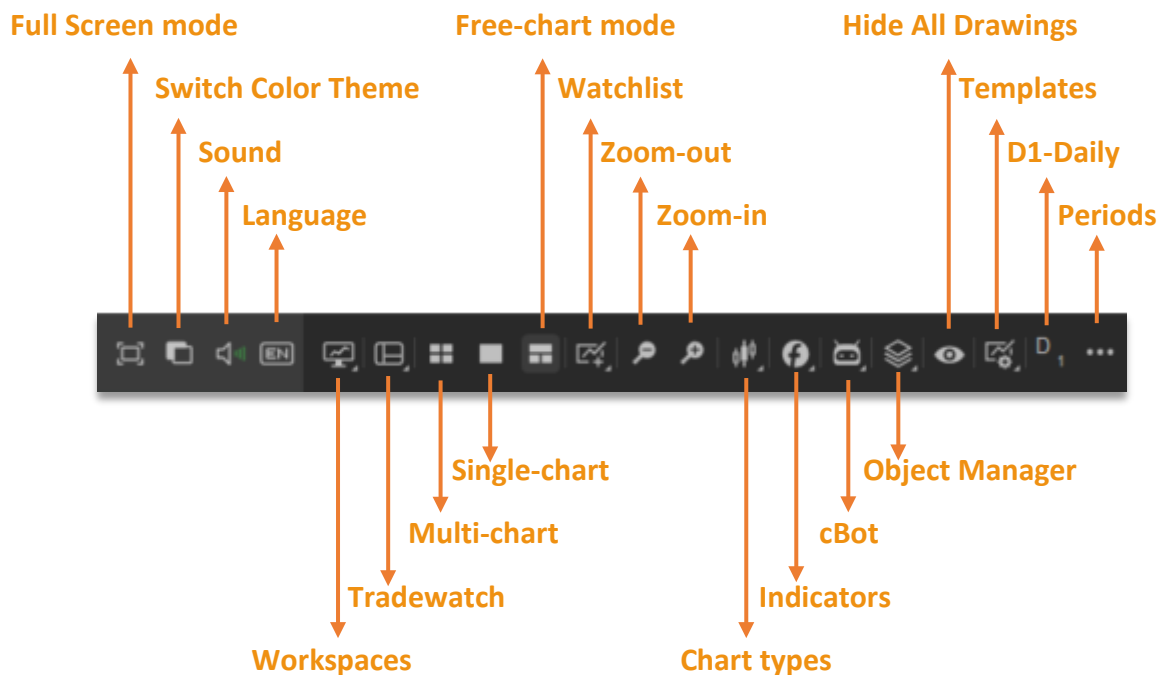
There are 3 main toolbars within the cTrader environment:

Account Bar



Within the **Account Bar**, you can switch between any of your Live or Demo accounts by simply clicking the 'arrow' on the right and choose any of your accounts.

Chart Preferences





Tool Bar

Unlike the other toolbars, this one can be moved and docked around the chart as the user prefers.

There are 14 options to choose from where some of them have multiple options as well:

- **Cursor**
- **Crosshair**
- **Market Snapshot**
- **Trend Line(s)**
- **Pencil**
- **Equidistant Price channel**
- **Andrew's Pitchfork**
- **Fibonacci**
- **Shapes**
- **Markers**
- **Text**
- **Colors**
- **Chartshot**
- **Price Alerts**

Mouse Cursor

With the 'Mouse Cursor' option selected you can move the chart and objects drawn on it.

Crosshair

This option enables you to pin-point specific areas in both time and market price and measure the difference from the starting point. It is measured in Pips, Periods and Price.

If indicators already exist in the Chart, their values will be displayed as well.

Market Snapshot

When this option is selected, you can move your mouse anywhere within the Chart and it will display the Symbol's Time, Date, Price, Open, High, Low, Close and Volume values.

If indicators already exist in the Chart, their values will be displayed as well.

Trend Lines

Vertical Line

The 'Vertical Line' can be used to define periods. One point must be chosen to impose the line on the chart. Once the line is set, you can easily edit the positioning by clicking on it and move it elsewhere.



Horizontal Line

The 'Horizontal Line' can be used to mark support and resistance levels. One point must be chosen to impose the lines on the chart. Once the lines are set, you can easily edit the positioning by clicking on them and move them elsewhere.



Trend Line



The 'Trend Line' as the word implies, can be used to explore market trends. To do this, you must choose two points. Simply click the mouse button and hold, while dragging to your preferred position. Once the left mouse button is released, the line will be set.

You can easily edit the positioning by clicking on it and dragging it to another place. If you click on either end of the line, you will be able to edit the positions of each point on the chart.

Pencil



The Pencil Tool allows drawing shapes and objects of their choosing directly on the charts in any chart mode using a pen cursor. Pencil can be used to free form draw on or annotate a chart. It is not bound to a specific shape like most other drawing tools and allows making your notes directly on the chart when setting up a trade, which proves useful for later reviewal purposes.

To use a pencil, select the Pencil icon from the instruments toolbar and start drawing by holding the left mouse button on the chart. Use Color and Thickness to apply to your pencil marks. Right-click on a pencil drawing to open its settings.

Equidistant Price Channel




The Equidistant Price Channel is formed when the price movement finds support and resistance between two parallel trend lines. The term "equidistant" means "of equal distance". This refers to the parallel trend lines that are an equal distance apart from one another. The Equidistant Channel can be both ascending (bullish) with higher highs and higher lows or descending (bearish) with lower highs and lower lows.

To set the channel, you must choose two points. Click the mouse button and hold, while dragging to your preferred position. Once the left mouse button is released, the two parallel lines will be set.

You can easily edit the positioning by clicking on it and dragging it to another place. If you click on either end of the line, you will be able to edit the positions of each point on the chart.



Andrew's Pitchfork

Andrew's Pitchfork is a  technical tool that helps to identify possible support and resistance levels as well as potential breakout and breakdown levels with three parallel trend lines that look like a pitchfork. This tool, developed by Alan Andrews, uses trend lines that are created by selecting three points placed at three consecutive peaks and troughs at the start of confirmed trends, higher or lower. Once the points are placed, a straight line denoting the median line is drawn from the first point through the midpoint between the upper and lower points. Upper and lower trend lines are then drawn automatically parallel to the median line.

To set this, you must first choose a starting point of the central trendline and an uptrend or a downtrend. Click anywhere within the chart to set your starting point and while holding your left mouse button, you can set the positioning of the lines.

Once it is set, you can click anywhere between the 4 points to move the lines.

Fibonacci

Fibonacci Retracement



Fibonacci Retracement is a charting tool that uses horizontal parallel lines to indicate areas of the support or resistance at the key Fibonacci levels before the trend continues in the original direction.

To set this, you must choose one point within the chart. Click the left mouse button and hold, while dragging to your preferred position. Drag horizontally to adjust the width and vertically to adjust the height.

Once it is set, you can move it around by clicking on either of the lines. To edit the width and height, click on any of the highlighted points.

Fibonacci Fan



A Fibonacci Fan is a charting tool that is used to estimate support and resistance levels by drawing the trend lines based on the Fibonacci Retracement levels.

To set this, you must choose one point within the chart. Click the left mouse button and hold, while dragging to your preferred position.

Once it is set, you can move it around by clicking on either of the lines. To edit the width and height, click on any of the highlighted points.



Fibonacci Expansion



Fibonacci Expansion is a charting technique used to plot possible levels of support and resistance by tracking not only the primary trend but also the retracement. The tool is very similar to the Fibonacci Retracement, but also it is intended to determine the end of the third wave. Unlike Fibonacci Retracement, this tool is built not on the only one trendline, but two.

To set this, you must choose two points within the chart. Click the left mouse button and hold, while dragging to your preferred position to set the starting point. Once your left mouse button is released, you can then move anywhere within the chart to set the second point.

Shapes

You can choose between Rectangles, Ellipses and Triangles as outlines or filled shapes directly in the chart. By default, the Rectangle is displayed in the Instruments toolbar. Hover over the Shapes button to select a shape.

To draw a shape, click on the corresponding button on the Instruments toolbar, then hold the left mouse button in the chart and move the cursor. Release the button to draw a shape.

To move a shape just drag and drop it to any desired location on the chart.

To resize a shape object, hover over the key points and drag and drop them.

To edit a shape right-click on it and select the line type, thickness, and colour. Check the Fill shape box to make it filled and select the opacity level.

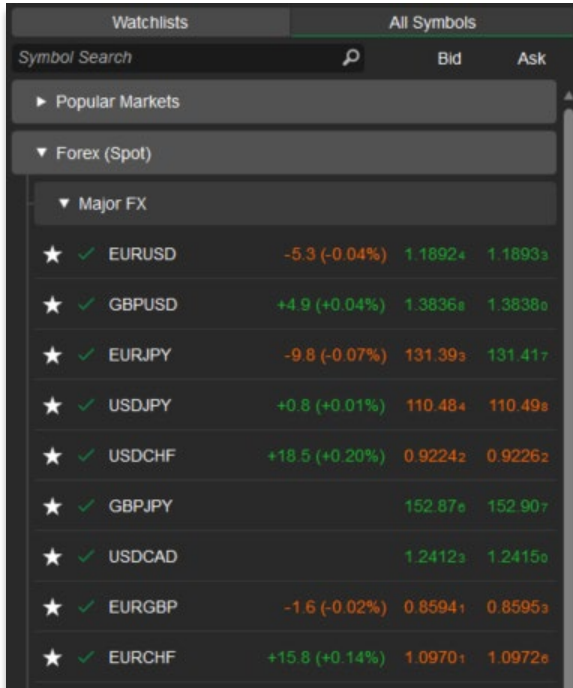
Markers

There are 8 different types of markers to choose from. You can place Circles, Up Arrows, Down Arrows, Squares, Diamonds, Stars, Up and Down Triangles.

To move a marker just drag it to any desired location on the chart. To change the marker colour, click on the marker to select it, then click the Color icon on the Instruments toolbar, and select the desired colour.



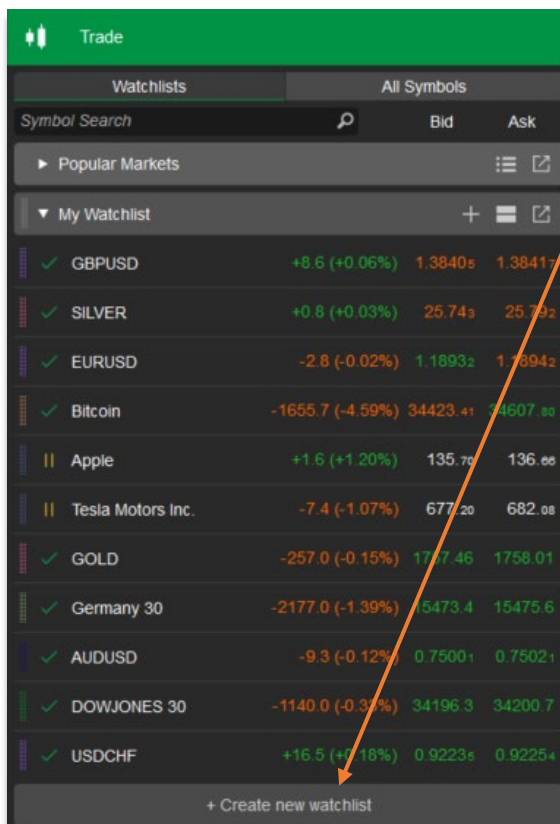
Watchlist



Watchlists		All Symbols		
Symbol Search			Bid	Ask
▶ Popular Markets				
▼ Forex (Spot)				
▼ Major FX				
★	✓ EURUSD	-5.3 (-0.04%)	1.18924	1.18933
★	✓ GBPUSD	+4.9 (+0.04%)	1.38368	1.38380
★	✓ EURJPY	-9.8 (-0.07%)	131.393	131.417
★	✓ USDJPY	+0.8 (+0.01%)	110.484	110.498
★	✓ USDCHF	+18.5 (+0.20%)	0.92242	0.92262
★	✓ GBPJPY		152.878	152.907
★	✓ USDCAD		1.24123	1.24150
★	✓ EURGBP	-1.6 (-0.02%)	0.85941	0.85953
★	✓ EURCHF	+15.8 (+0.14%)	1.09701	1.09720

Through the **'Watchlist'** you have the option to switch between **'Watchlists'** and **'All Symbols'**.

'Watchlists' allow you to create your own **'Watchlist'** with as many Symbols as you wish, while **'All Symbols'** break down all available Symbols per **'Asset Class'**.



Trade		Watchlists			All Symbols					
Symbol Search			Bid	Ask						
▶ Popular Markets					☰	🔗				
▼ My Watchlist					+	☰	🔗			
✓	GBPUSD	+8.6 (+0.06%)	1.38405	1.38417						
✓	SILVER	+0.8 (+0.03%)	25.743	25.732						
✓	EURUSD	-2.8 (-0.02%)	1.18932	1.18942						
✓	Bitcoin	-1655.7 (-4.59%)	34423.41	34607.80						
	Apple	+1.6 (+1.20%)	135.78	136.08						
	Tesla Motors Inc.	-7.4 (-1.07%)	677.20	682.08						
✓	GOLD	-257.0 (-0.15%)	1737.46	1758.01						
✓	Germany 30	-2177.0 (-1.39%)	15473.4	15475.6						
✓	AUDUSD	-9.3 (-0.12%)	0.75001	0.75021						
✓	DOWJONES 30	-1140.0 (-0.37%)	34196.3	34200.7						
✓	USDCHF	+16.5 (+1.18%)	0.92235	0.92254						
					+ Create new watchlist					

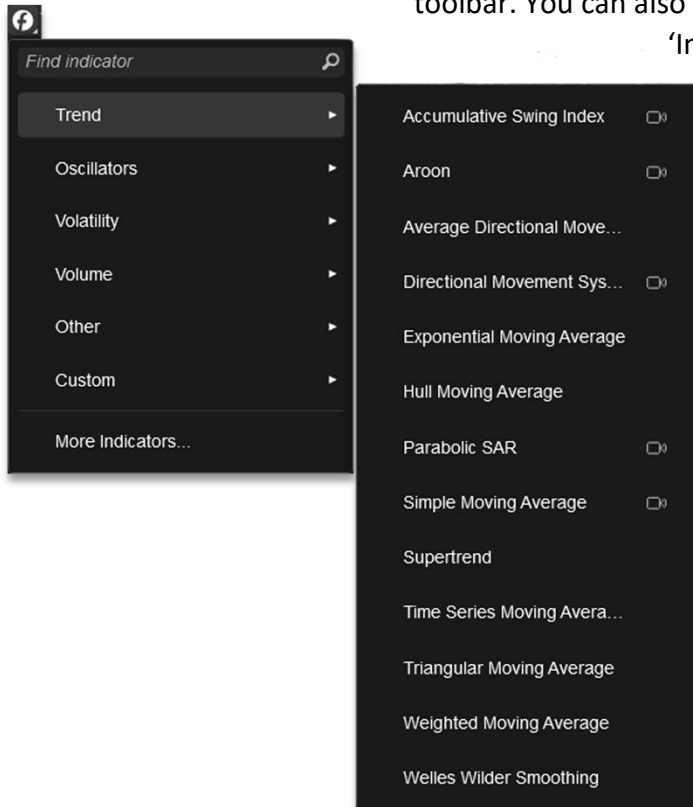
You can simply click **'Create new watchlist'** and name your new watchlist as you prefer.

Once done, you can add any Symbol you wish to have under your Watchlist by clicking the **+** button.



Indicators

Indicators' menu can be opened by pressing the 'Indicators' button within the 'Charts' toolbar. You can also right-click on the chart and select 'Indicator'.



Skilling cTrader comes with five groups of Technical Indicators which are:

- Trend
- Oscillators
- Volatility
- Volume
- Other

You can also customize Indicators.

Each group has a wide range of sub 'Technical Indicators' to choose from (more than 60).



Trading

Skilling cTrader offers 6 different types of orders:

1. Market Orders
2. Limit Orders
3. Stop Orders
4. Stop Loss
5. Take Profit
6. Stop Limit Orders

Market Order

The screenshot shows the 'New Order' window for EURUSD. The order type is 'Market'. The price is 1.15443. The 'Market Range' is set to 5.0 Pips. The 'Place Order' button is highlighted in green. The window also shows the spread (1.0), high (1.15595), and low (1.15409). The volume is set to 1k. The estimated buy margin is € 33.33. The pip value is € 0.08. There are checkboxes for 'Stop Loss' and 'Take Profit'. A comment field is also present.

A **Market Order** is essentially a request to Open or Close a trade.

Once you place the order, it will be executed at the next best available price.

When the market is volatile, it is possible that your order may be executed at a different price than the one appearing at your Trade ticket. Depending on the market's direction, it may be executed at a better or a worse price (Slippage).

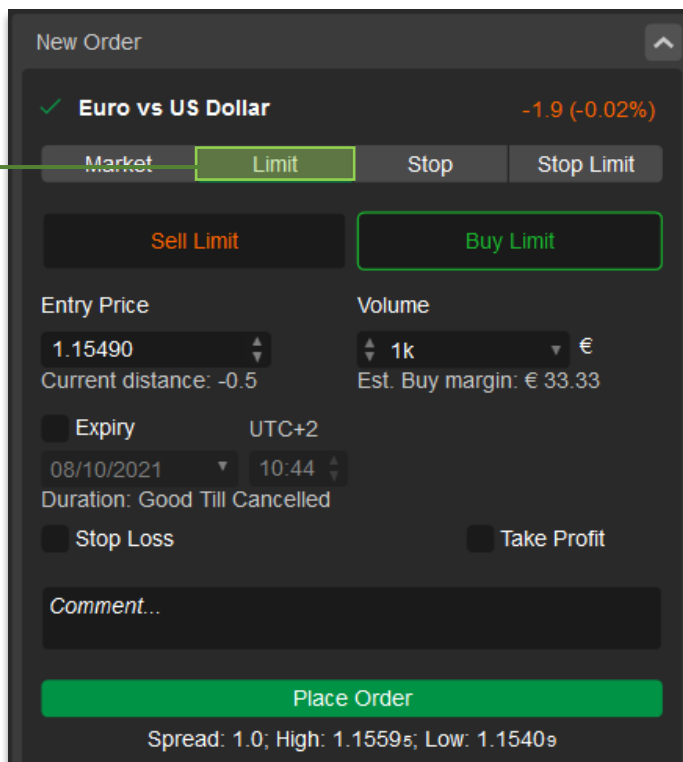
Skilling cTrader, allows you to limit the Slippage by selecting the **'Market Range'** box and defining the maximum deviation you can tolerate.

Setting a value of Zero will basically convert the Market Order into a limit order, which will guarantee zero Slippage but will also increase the possibility of 'Rejection'.

You can also attach a **Stop Loss** or/and **Take Profit** before opening your trade. Otherwise, you can do this once your trade is already opened by modifying your position.



Limit Order



New Order

✓ Euro vs US Dollar -1.9 (-0.02%)

Market Limit Stop Stop Limit

Sell Limit Buy Limit

Entry Price 1.15490 Volume 1k €

Current distance: -0.5 Est. Buy margin: € 33.33

Expiry UTC+2 08/10/2021 10:44

Duration: Good Till Cancelled

Stop Loss Take Profit

Comment...

Place Order

Spread: 1.0; High: 1.15595; Low: 1.15409

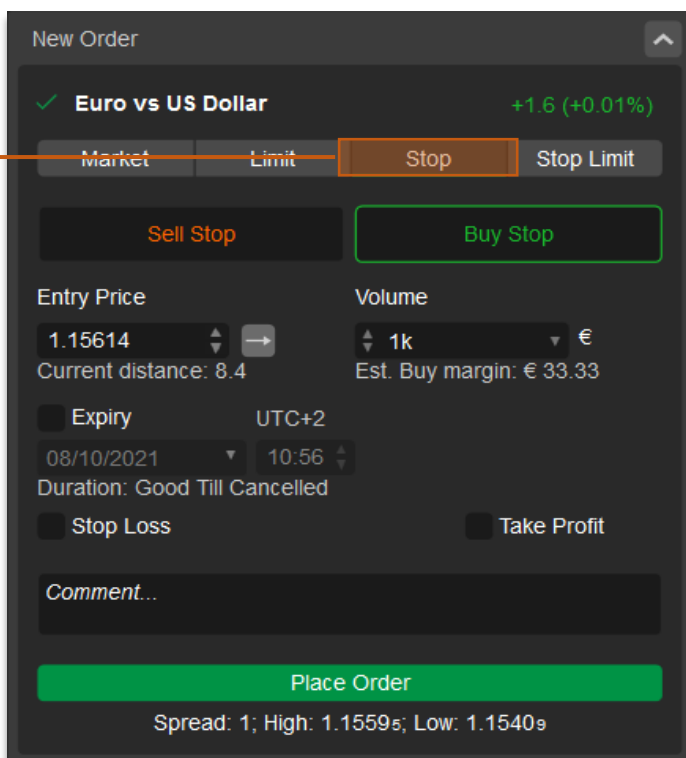
A **Limit Order** is a pending order to buy or sell at a price you specify. Limit Orders can only be executed at the specified or at a better price.

A **Buy Limit** can be set at a price which is lower than the current market price and it will be executed once and if the market reaches that level.

A **Sell Limit** can be set at a price which is higher than the current market price and it will be executed once and if the market reaches that level.

You also have the option to choose an **Expiry date**. That means you can define a date and time where if the order is not executed by then, it will then be cancelled automatically.

Stop Order



New Order

✓ Euro vs US Dollar +1.6 (+0.01%)

Market Limit Stop Stop Limit

Sell Stop Buy Stop

Entry Price 1.15614 Volume 1k €

Current distance: 8.4 Est. Buy margin: € 33.33

Expiry UTC+2 08/10/2021 10:56

Duration: Good Till Cancelled

Stop Loss Take Profit

Comment...

Place Order

Spread: 1; High: 1.15595; Low: 1.15409

A **Stop Order** is a pending order to buy or sell at a price you specify.

Stop Orders; once triggered, they will be treated as market orders. Meaning that they will be executed at the next best available price.

A **Buy Stop** can be set at a price which is higher than the current market price and it will be executed once and if the market reaches that level.

A **Sell Stop** can be set at a price which is lower than the current market price and it will be executed once and if the market reaches that level.



Stop Limit Order

New Order

✓ Euro vs US Dollar +0.5 (0.00%)

Market Limit Stop **Stop Limit**

Sell Stop Limit **Buy Stop Limit**

Entry Price: 1.15545
Current distance: 2.5

Volume: 1k €
Est. Buy margin: € 33.33

Limit Range: 5.0 pips

Expiry: 08/10/2021 10:57 UTC+2
Duration: Good Till Cancelled

Stop Loss Take Profit

Comment...

Place Order

Spread: 1.1; High: 1.15595; Low: 1.15405

A **Stop Limit Order** is essentially a Stop Order with the same characteristics as that of a Limit Order.

Stop Limit Orders once triggered, they will be treated as limit orders. Meaning that they can be executed with a limited range of potential Slippage.

A **Buy Stop Limit** can be set at a price which is higher than the current market price and it will be executed once and if the market reaches that level.

A **Sell Stop Limit** can be set at a price which is lower than the current market price and it will be executed once and if the market reaches that level.

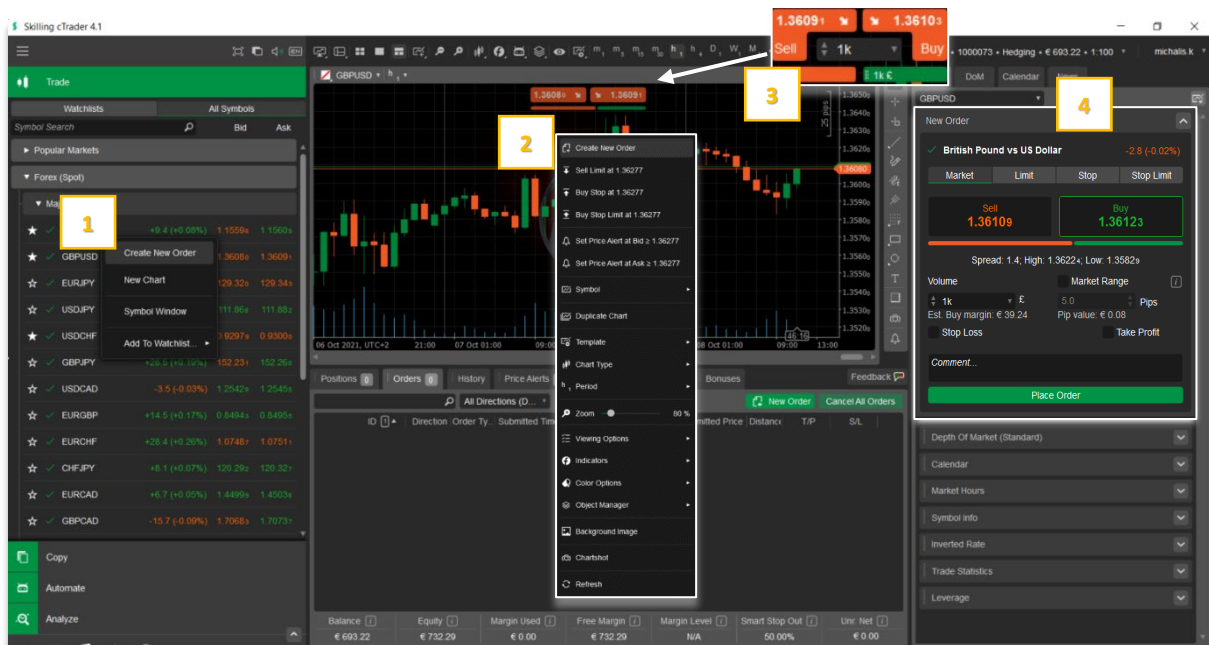
By inserting a value in the **Limit Range** section, you can specify your tolerable amount of Slippage for this order.

Setting a value of zero, will mean that you wish to have zero slippage for this order, but it will potentially increase the chances of rejection.



Create Orders

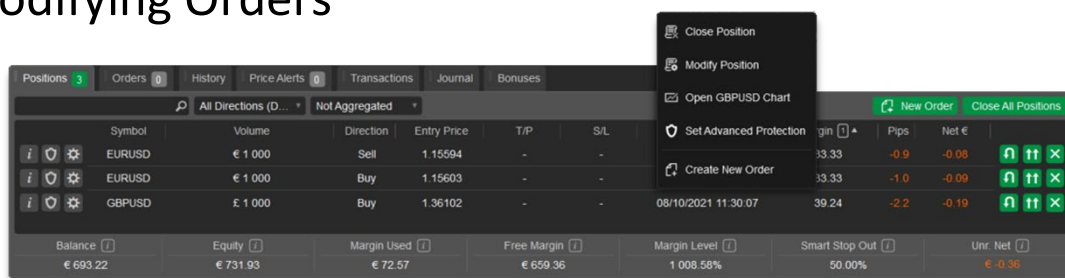
There are multiple ways to open a trade, or to create a pending order.



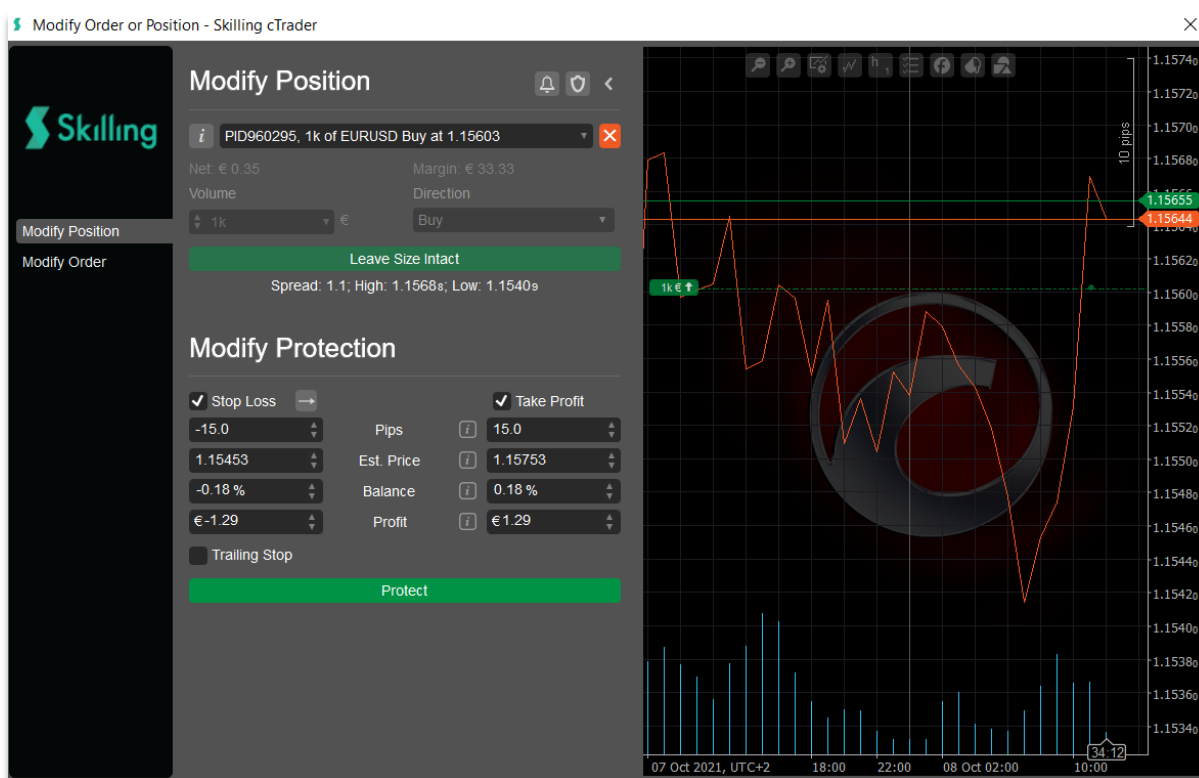
1. Right click on 'Trade Watch'
2. Right click on 'Chart'
3. Buy/Sell buttons on 'Chart'
4. Place order on 'Trade ticket'



Modifying Orders



Right-click on an open trade and select 'Modify Position'. Alternatively, you can double-click on an open trade and the modification panel will pop up.



- **Pips** – Choose how many Pips you tolerate to lose (Stop Loss) or wish to make (Take Profit)
- **Est. Price** – Set your Stop Loss or Take Profit price
- **Balance** – Choose the percentage of your balance that you tolerate losing (Stop Loss) or wish to make (Take Profit)
- **Profit** – The exact amount you tolerate in losing (Stop Loss) or wish to make (Take Profit).

Regardless which method you choose, the rest of the parameters will change automatically.

By choosing a Stop Loss price, you will also see how many pips that means, the percentage change in your Balance and the exact Profit you will lose. Same for Take Profit.

Trade responsibly: Your Capital is at risk*

This content is provided for information purposes only and should not be construed as containing investment advice.